



BOA 2000

MONITORS

BOA 2000

The efficient 4" vaned waterway and 3.5" discharge matched with an SM-2000E master stream nozzle delivers an effective stream while the power of the EXM provides all of the user-programmable options, including travel limits, oscillation, stow and keep-out zones.

Powered by:

~~EXM~~

5-12

Boa 2000
Mo. 7451
(Nozzle sold separately)

EXM Control
Module

3.5" NHT Discharge

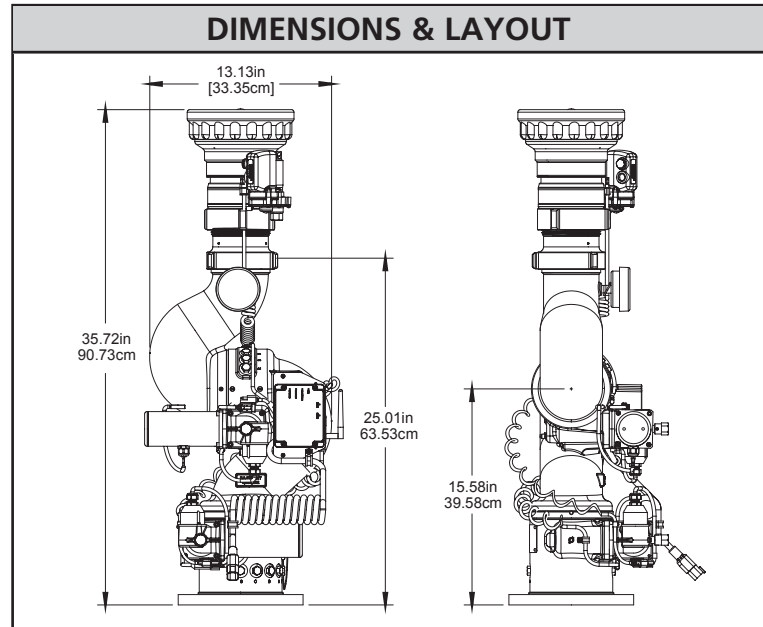
4" 150# Flange

2000
GPM








200
PSI



SPECIFICATIONS	
Model	7451
Max Flow	2000 GPM (7570 LPM)
Max Pressure	200 PSI (13.8 bar)
Inlet	4" 150# Flange
Outlet	3.5" Male NHT
Travel (Factory Settings)	V: -45° to +120° (120°) H: L175 to R175 (350°)
Voltage	11-32 VDC
Control Communication	CAN bus (J1939) Digital radio frequency (unlicensed)
Material/Finish	Red urethane enamel, hard anodized Elk-O-Lite®
Stow Height	20"
Weight	47 Lbs. (21.3 kg)



Recommended Products

Panel Mount	Handheld	Joystick	OEM Interface Module	Position Display	X-Stream Series Nozzle	External RF Antenna
(2) 	(3) 	(4) 	(5) 	(6) 	(7) 	(8) 

Components & Options Chart

COMPONENTS & OPTIONS			ILLUSTRATION	MODEL
Electric Nozzles	X-Stream Series Automatic	3.5" Inlet: 350-1250 GPM (1325-4731 LPM)	7	SM-1250E
		3.5" Inlet: 500-2000 GPM (1893-7571 LPM)	7	SM-2000E
Controllers	EXM Panel Mount Controller	Complete panel mount operator control suitable for 2-wire connection to any EXM enabled component.	2	7010
	EXM Handheld Controller Kit	This package includes the panel mount controller (7010), handheld conversion kit (7020), & RF transceiver module (7061). Comes pre-assembled, configured, and ready to use.	3	7015
	EXM Joystick Controller	Joystick operator control unit suitable for connection to an EXM OEM Interface Module.	4	7030
Modules	EXM Position Display Module	Monitor vertical and horizontal position display unit suitable for 2-wire connection to any EXM enabled component.	6	7051
	EXM OEM Interface Module (Wireless RF & CAN)	EXM system interface - allows connection of model 7030 Joystick or other simple OEM supplied electromechanical switches to EXM system.	Not Pictured	7072
	EXM OEM Interface Module (Wired CAN only)	EXM system interface - allows connection of model 7030 Joystick or other simple OEM supplied electromechanical switches to EXM system.	5	7073
	EXM CAN Stow Module	Connects to lockout devices to prevent equipment damage due to an improperly positioned monitor.	Not Pictured	7095
Accessories	External RF Antenna	10 ft extension for 7070 OEM Interface module	8	7062